

Cedara I-Reach is a  
powerful web-enabled  
PACS Workstation.

### Universal Image Access

Softcopy reporting should mean that images are available where, when and how you need them. Beyond the needs of radiological reporting, a Picture Archiving and Communications System (PACS) should provide image access to referring physicians, clinicians and other healthcare specialists.

Dedicated workstations, while robust in functionality, present some limitations in terms of image access. Beyond image needs within your institution, PACS solutions also need to accommodate the needs of teleradiology; they should provide a solution for on-call Radiologists, who would like to review images from offsite locations; they should allow physicians at multi-site facilities to view patient images during rounds.

For environments where immediate image access can make the difference between life and death, your PACS solution needs to *extend the reach* of Medical Imaging.

### A Solution for Your Complete Enterprise

**Cedara I-Reach™** is a web-based DICOM server that provides access to relevant information at the appropriate time, presented in the proper context, with clinically relevant tools for accurate and timely patient outcomes.

This internet-deployable technology provides the ultimate information access utilizing web-enabled technologies.

The **Cedara I-Reach** software provides:

- web-based report and image viewing
- easy-to-use administration tools
- security and privacy features to facilitate hospital HIPAA compliance
- automated workflow tools for increased productivity
- scalable design for small-, medium- or enterprise-sized hospitals
- integration with OEM archives and HIS/RIS for ease of implementation

## Optimized Workflow

### Image Manipulation and Viewing Tools

- Current and prior comparisons
- Basic image manipulation and measurement tools
- Configurable toolbars and right-click pop-up menus improve workflow

### Simple Administration

**Cedara I-Reach** is easier than ever to administer using tools such as:

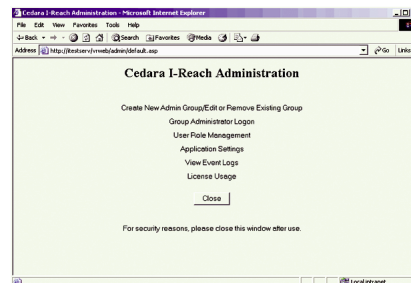
- Role-based access defines user privileges
- Centralized version management for quick and easy software upgrades
- Centralized user profile management for configuring user preferences
- Roaming profile gives users access to their preferences from any computer

### Image Compression

- Facilitates quick display and loading of large datasets across low bandwidths using DICOM JPEG 2000 progressive decompression techniques

### Efficient Workgroup Reading

- Ability to share worklists and mark studies as read allows users to collaborate more effectively



Administrative tasks such as system maintenance, user profile creation and tracking can be easily performed using Cedara I-Reach's intuitive user interface

## Facilitates HIPAA Compliance

- User access tracking and activity login
- 128-bit encryption support for Internet access
- Security login restricts access to authenticated users
- Auto time-out guards against unauthorized access

## Advanced Functionality

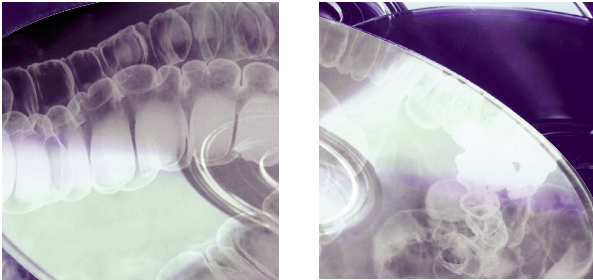
Advanced tools are available as options to add functionality to the application and are easily deployed over the web. Using floating licenses, I-Reach enables different healthcare professionals to share advanced features on multiple PCs throughout the enterprise

### 3D Tools

- Multiplanar Reformatting (MPR) including Thick Slab support
- 3D Volume Rendering of Point and Click Classification
- Batch Reformatting and Curve Reformatting
- Maximum Intensity Projection (MIP)

### Orthopaedic Tools and Templates

Orthopaedic tools and templates are available to assist Orthopaedic Surgeons with planning using digital images. Image relation and Cobb angle measurements are just some of the specialized tools provided. Digital prosthetic templates can be overlaid on images for accurate sizing of prosthetic devices.



### Image Portability

Cedara I-Reach includes capabilities that allow DICOM images to be burned to CD or DVD, so that patients, referring physicians and other specialists without PACS access can view medical images. Bundled with a “lite viewer”, I-Reach’s portable media solution provides comprehensive image access.

### Scalable Solution

#### Web-Enabled Deployment

The remote user can perform image viewing and manipulation via the Internet. The client software is automatically downloaded the first time the user accesses the **Cedara I-Reach** server from their computer. Advanced tools are also downloaded depending on user privileges.

#### Upgradability

Because **Cedara I-Reach** is web-enabled, deploying software upgrades is easy. Upon upgrading the server software, the client software is deployed automatically over the web.

#### Progressive Downloading

The **Cedara I-Reach** software uses progressive downloading to give users instant access to images with immediate interactivity while the entire study loads to the client.

### Scalable to Include Multiple Healthcare Facilities

**Cedara I-Reach** readily scales healthcare enterprises incorporating multiple facilities for easy access to studies from many different locations.

### Scalable to Include Multiple Healthcare Facilities

Cedara I-Reach can be easily scaled for growing healthcare enterprises, allowing multi site facilities to share study reading, and for referring physicians today and tomorrow. Using storage independent servers, I-Reach can grow with the changing needs of an institution. On the fly component upgrades can be easily performed by plugging in additional appliances without service interruption.

### Information System Integration

Based on years of experience in system integration, Cedara I-Reach was designed to allow easy interoperability with information repositories. From Radiology Information Systems (RIS) to Hospital Information Systems (HIS) and EMR solutions, Cedara I-Reach can be implemented in a variety of different contexts as an integrated imaging solution.





# Cedara I-Reach™



## A Comprehensive Solution for the Entire Enterprise

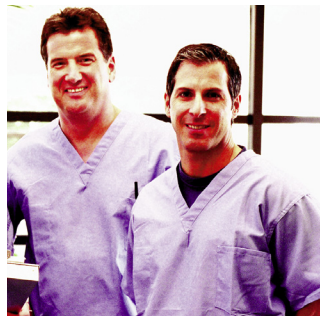
As a web enabled PACS workstation, Cedara I-Reach provides unique functionality for different professionals throughout the healthcare enterprise. Regardless of whether you are transitioning from a film-based environment, have an existing clinical PACS solution or are upgrading an enterprise system, I-Reach has something for you,

### Patients

Recognizing that long waiting times affect all elements of the care process, I-Reach allows comprehensive image access through the healthcare network, allowing different specialists to access to your results where and when they need them. This means less time waiting for tests to happen as a result of less data entry, web-based appointment scheduling, and overall improved efficiency.

### Radiologists

If you're having problems with slow film processing, accessing relevant priors, report generation, or using your PACS system through a VPN, you're probably not using I-Reach. From image manipulation and advanced 3D functionality to seamless integration with your RIS, HIS, and EMR, I-Reach will streamline your workflow.



### Technologists

Imagine all the information you need in one place - previous reports, previous images, and useful tools to move through your caseload like CD creation and queue monitoring. No more redundant patient information input.

### Clinicians

How does high-powered technology on an enterprise-wide level sound? How about less time waiting for images and data? Cedara I-Reach eliminates the distinction between diagnostic and clinical software by providing advanced tools at every workstation.

### Hospital Administrators / Executives

Finally, a way to achieve your business plans. I-Reach is the ultimate solution to improve your institution's efficiency and turnaround times. With easy integration, it allows institutions to augment their current tools, while leveraging current (and/or future) hardware contracts. Unlike many other solutions on the market, I-Reach provides solid functionality for future growth and promotes a comprehensive health IT strategy.