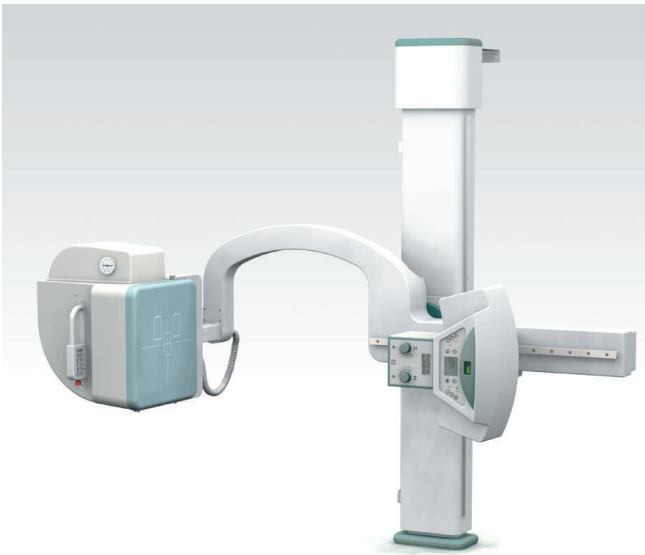


IMIX URS-DDR DIGITAL X-RAY SYSTEM



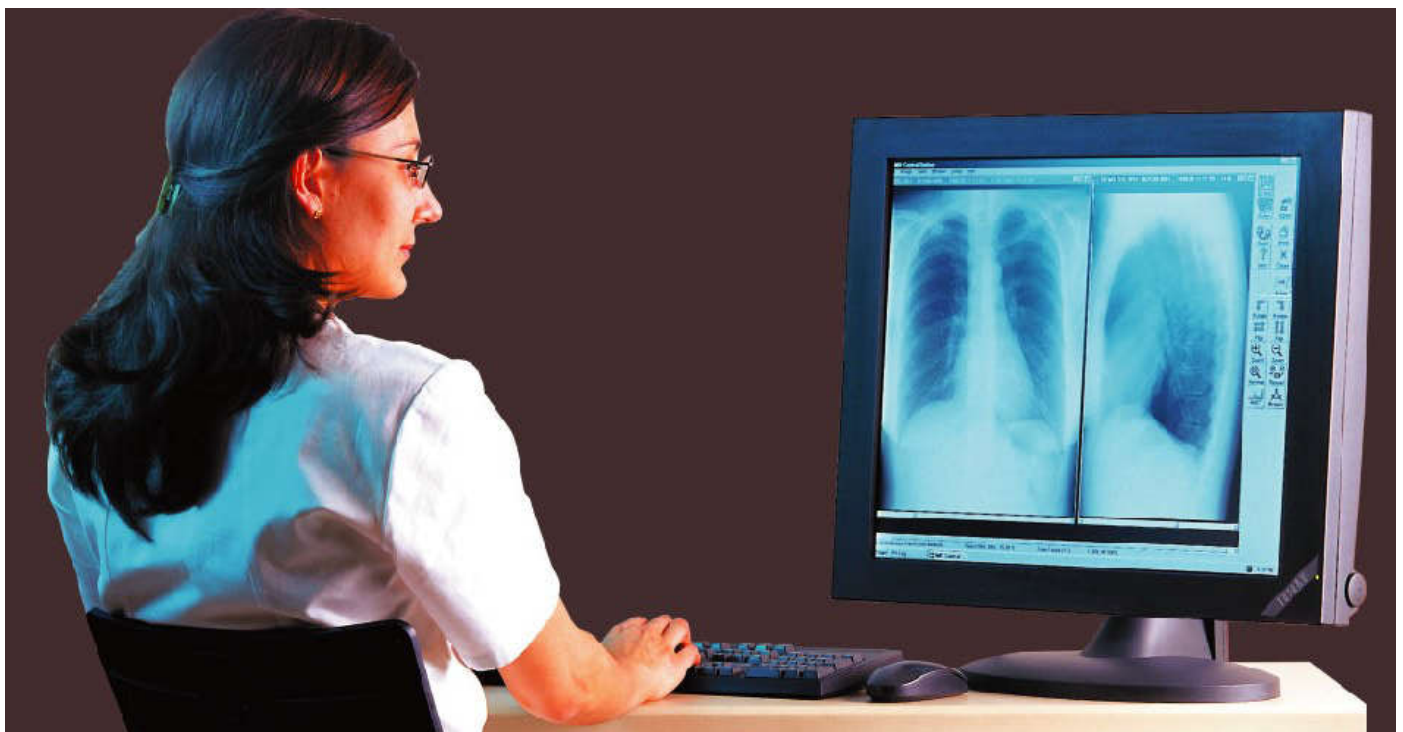
IMIX URS-DDR SYSTEM

The IMIX URS-DDR System incorporates a sophisticated multi-position radiographic unit with the IMIX Digital Detector and Image Workstation. A full range of general radiographic examinations, including cross-table laterals, can easily be performed on erect or recumbent patients.



IMIX Direct Digital Radiography

The IMIX system provides speed and functionality through the utilization of a high output Anatomically Programmed X-ray subsystem and a Windows based Image Control Station with Dicom 3.0 output to Image Management Systems or printers



System Features

URS Radiographic Stand

Fully motorized movements with intelligent anti-collision system
Automatic settings for 40 and 72 inch SID, auto-position for table exposures
Patient Table capacity of 440 lbs
Collimator with light field and laser positioning

X-Ray Subsystem

64 kW High Frequency Compact Generator
Full Anatomical Programming
Automatic Exposure Control
High Capacity (300kHU) X-ray tube with 0.6/1.2mm focus (27/75kW)
Microprocessor System Monitor

2000 HR Digital Detector

High Resolution 4 megapixel or 16 megapixel CCD detector
40cm x 40cm Image Format (16 x 16 inch)
Spatial Resolution: >2.5 lp/mm (4Mp) or >4.3 lp/mm (16Mp)
Image Acquisition: 16 bit
3 Field Ionization Chamber
200 Line, 12:1 Grid

Image Workstation

Image Review within 10 seconds of exposure
Windows Based Image Review and Management Tools
20 inch Flat Panel HR Display
Local storage for more than 1000 images
Dicom 3.0 compliant
Network Connectivity

IMIX ADR (EUROPE)
Richmond, Surrey UK
+44(0)20 89732264
emea@imixadr.com

IMIX ADR (ASIA)
Beijing, China
+86(0)10 64379238
asia@imixadr.com

IMIX ADR (USA)
Landrum, SC USA
+1(864) 895-5709
america@imixadr.com