

**MINDRAY**



**DC-3**

NEW

Diagnostic Ultrasound System



# DC-3

## Diagnostic Ultrasound System

Designed on the all-digital architecture, the DC-3 provides convincing imaging performance with smooth workflow to accommodate a wide range of clinical applications in different working environments. The DC-3 integrates amazing color imaging capability with uncompromised 2D responsibility.



# Technologies guarantee confident diagnosis

## Key technologies include:

**PowEngin working with all DC-3 transducers** provides image homogenization throughout the whole field of view.

**Multi-beam Parallel Imaging (MBP)** increases temporal resolution and real-time frame rate to collect more information and re-build high quality images.

**High Density Sampling(HDS)** integrated signal special processing exalts expression of details to provide more diagnosis confidence.

**Accurate Vessel Imaging (AVI)** automatically distinguishes subtle tissue Doppler signal from blood cells to form high resolution images.

**Synthetic Aperture Processing (SAP)** significantly improves image uniformity and penetration.

## Advanced technology include:

**iBeam™** adjustable according to user preference, innovates new ideas of compounding imaging to rebuild high quality image with retention of frame rate.

**Tissue Harmonic Imaging (THI)** enhances contrast and spatial resolution with better resisted imaging noise.

**Trapezoid Imaging** increases anatomic information by providing wider field of vision separately in 2D and color modes

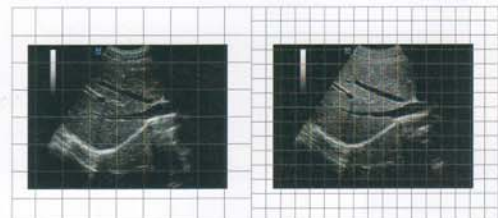
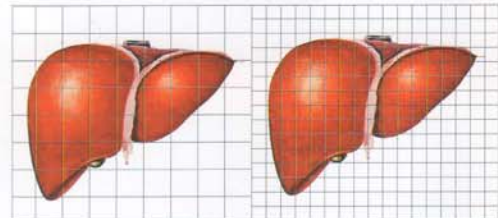


Image without HDS

Image with HDS

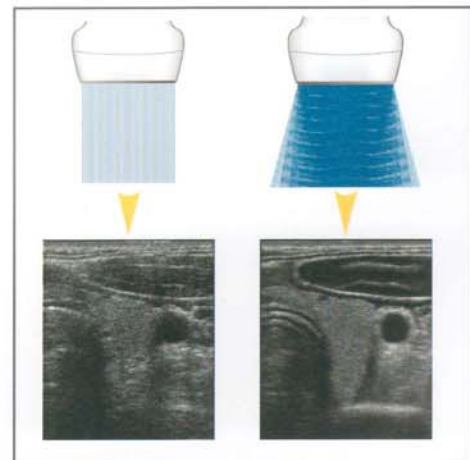
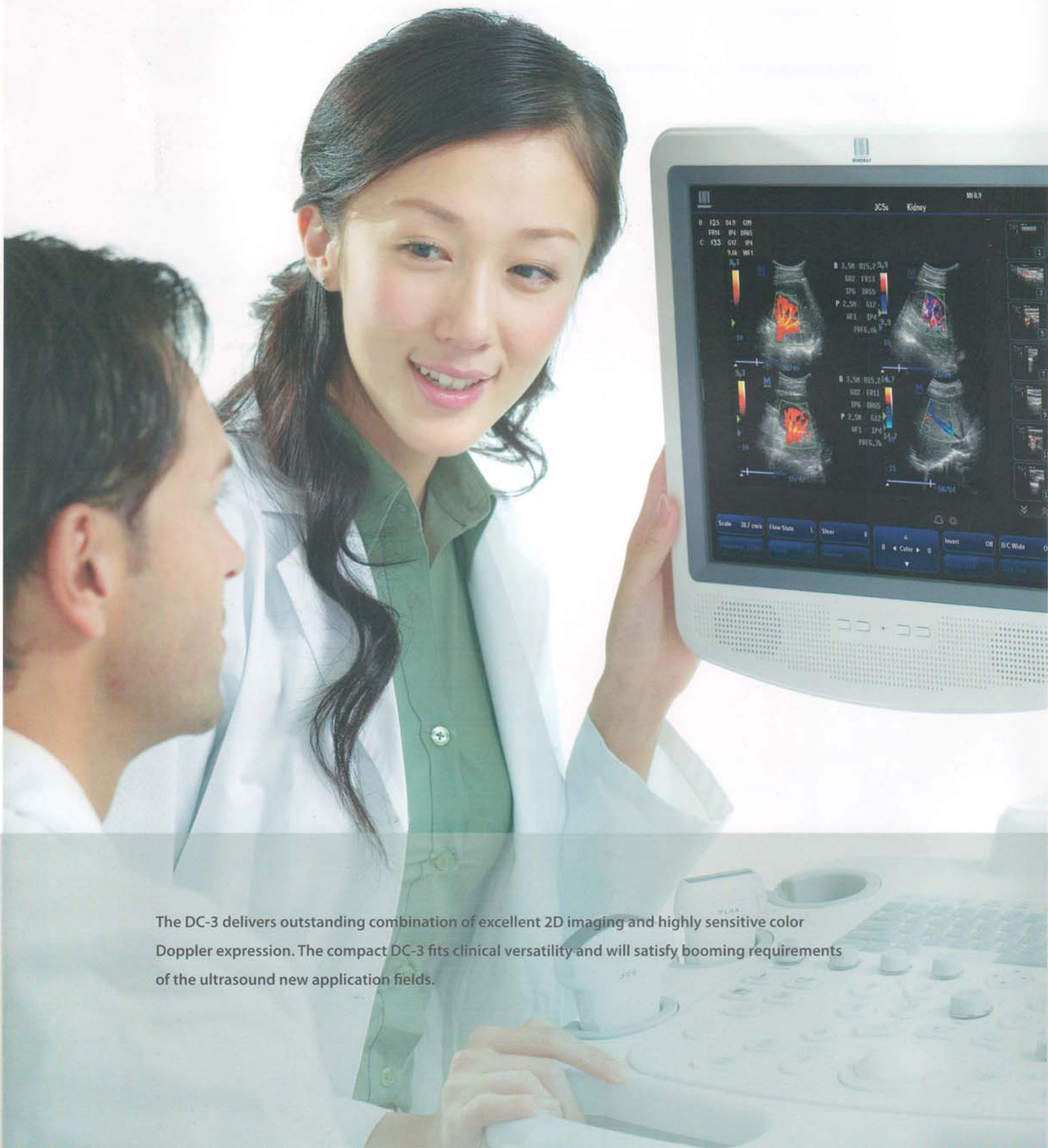


Image before iBeam™

Image after iBeam™



## High-quality 2D imaging and sensitive color Doppler exams



The DC-3 delivers outstanding combination of excellent 2D imaging and highly sensitive color Doppler expression. The compact DC-3 fits clinical versatility and will satisfy booming requirements of the ultrasound new application fields.